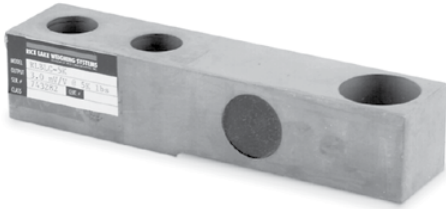
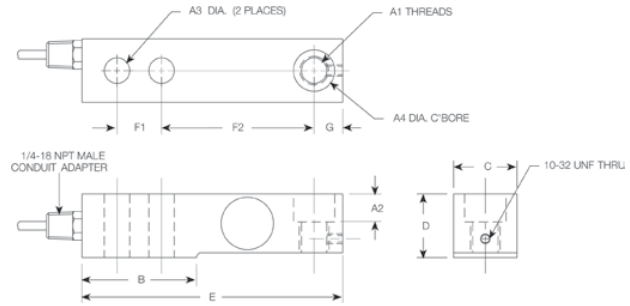


**RLBLC** Single-Ended Beam, Stainless Steel with Counter Bore



Picture is a representation of actual product



**SPECIFICATIONS**

<p><b>Full Scale Output:</b> 3.0mV/V nominal</p> <p><b>Bridge Resistance:</b> 1000 ohms, nominal</p> <p><b>Material/Finish:</b> Stainless steel</p> <p><b>Temperature:</b> Compensated range 15°F to 115°F/-9°C to 46°C</p>	<p><b>Seal Type:</b> Environmentally sealed</p> <p><b>Safe Overload:</b> 150% Full scale</p> <p><b>Safe Sideload:</b> 100% Full scale</p> <p><b>Rated Excitation:</b> 10V DC (15V maximum)</p> <p><b>Nonlinearity:</b> 0.03% Full scale</p>	<p><b>Hysteresis:</b> 0.05% Full scale</p> <p><b>Insulation Resistance:</b> 5000 megohms</p> <p><b>Deflection at Capacity:</b> 1000-4000 lb=.010 in/.25 mm, 5000-10,000 lb=.012 in/.30 mm</p> <p><b>Cable Length:</b> 1000-4000 lb=10 ft/3.1 m 5000-10,000 lb=20 ft/6.1 m</p>	<p><b>Cable Diameter:</b> .190 polyurethane jacket</p> <p><b>Cable Color Code:</b> Green..... + Excitation Black..... - Excitation White..... + Signal Red..... - Signal</p> <p><b>Warranty:</b> Two-year limited warranty</p>
---	---	---	--

**DIMENSIONS**

RATED CAPACITY	A1	A2	A3	A4	B	C	D	E	F1	F2	G
<b>lb/inches</b>											
1000-4000	1/2-20 UNF-2B	.56	.53	.81	2.25	1.21	1.19	5.25	1.00	3.00	.60
5000	3/4-16 UNF-2B	.79	.78	1.19	3.00	1.45	1.44	6.75	1.50	3.75	.75
10,000	3/4-16 UNF-2B	.79	.78	1.19	3.00	1.69	1.69	6.75	1.50	3.75	.75
<b>kg/mm</b>											
453.6-1814.4	1/2-20 UNF-2B	14.2	13.5	20.6	57.2	30.2	30.2	130.1	25.4	76.2	12.7
2268.0	3/4-16 UNF-2B	20.1	19.8	30.2	76.2	36.6	36.6	171.5	38.1	95.3	19.1
4535.9	3/4-16 UNF-2B	20.1	19.8	30.2	76.2	36.6	49.3	171.5	38.1	95.3	19.1

**ORDER INFORMATION**

LOAD RATING	PART #	PRICE
1,000 lb (453.6 kg)	17091	Consult
2,500 lb (1134.0 kg)	17096	Consult
4,000 lb (1814.4 kg)	17101	Consult
5,000 lb (2268.0 kg)	17104	Consult
10,000 lb (4535.9 kg)	17108	Consult
<b>Bushing (for conversion to non-counter bore)</b>		
1,000 lb-4,000 lb, SST	17691	Consult

**INTERCHANGEABLE PRODUCTS**

MANUFACTURER	MODEL	PAGE #
HBM®	BLC	239

RICE LAKE WEIGHING SYSTEMS